

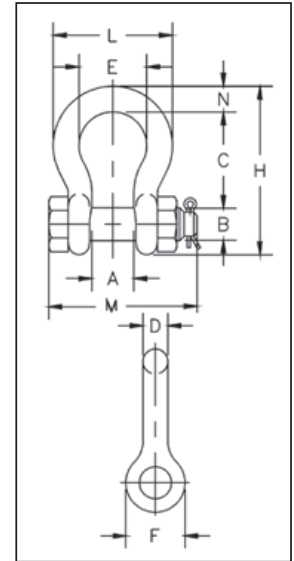
Crosby® Bolt Type Shackles



G-2130 / S-2130

Bolt Type Anchor shackles with thin head bolt - nut with cotter pin. Meets the performance requirements of Federal Specification RR-C 271G Type IVA, Grade A, Class 3, except for those provisions required of the contractor. For additional information, see page 475.

- Capacities 1/3 thru 150 metric tons, grade 6.
- Working Load Limit and grade "6" permanently shown on every shackle.
- Forged – Quenched and Tempered, with alloy bolts.
- Hot Dip galvanized or self colored. (85, 120, and 150 metric ton shackles are all hot dip galvanized bows and the bolts are Dimetcoated® and painted red)
- Sizes 3/8 and below are mechanically galvanized.
- Fatigue rated (1/3t - 55t).
- Shackles 25t and larger are **RFID EQUIPPED**.
- Approved for use at -40° C (-40° F) to 204° C (400° F).
- Meets or exceeds all requirements of ASME B30.26.
- Shackles 85 metric tons and larger are individually proof tested to 2.0 times the working load limit.
- Type Approval certification in accordance with ABS 2016 Steel Vessel Rules ABS Guide for Certification of Lifting Appliances available. Certificates available when requested at time of order and may include additional charges.
- 3.1 Certification as standard available for charpy and statistical proof test from 3.25t up to 25 tons to DNV2.7-1 and EN13889.
- Crosby 3.25t through 25t G2130OC anchor shackles are type approved to DNV Certification Notes 2.7-1- Offshore Containers. These Crosby shackles are statistical proof and impact tested to 42 Joules (31 ft•lbf) min. avg. at -20° C (-4° F). The tests are conducted by Crosby and 3.1 test certification is available upon request. Refer to page 87 for Crosby COLD TUFF® shackles that meet the additional requirements of DNV rules for certification of lifting applications - Loose Gear.
- All other 2130 shackles can meet charpy requirements of 42 Joules (31 ft•lbf) avg at -20° C (-4° F) when requested at time of order.
- Look for the Red Pin® . . . the mark of genuine Crosby quality.



Shackles



SEE APPLICATION INFORMATION
 On Page 92 of the General Catalog
 Para Español: www.thecrosbygroup.com

G-2130 / S-2130 Bolt Type Anchor Shackles

Nominal Size (in)	Working Load Limit (t)*	Stock No.			Weight Each (kg)	Dimensions (mm)											Tolerance +/-	
		G-2130	S-2130	G-2130OC		A	B	C	D	E	F	H	L	M	N	C	A	
3/16	1/3 ‡	1019464	–	–	.03	9.65	6.35	22.4	4.85	15.2	14.2	37.3	24.9	32.8	4.85	1.50	1.50	
1/4	1/2	1019466	–	–	.05	11.9	7.85	28.7	6.35	19.8	15.5	46.7	32.5	39.6	6.35	1.50	1.50	
5/16	3/4	1019468	–	–	.10	13.5	9.65	31.0	7.85	21.3	19.1	53.0	37.3	46.2	7.85	1.50	1.50	
3/8	1	1019470	–	–	.15	16.8	11.2	36.6	9.65	26.2	23.1	63.0	45.2	55.1	9.65	3.30	1.50	
7/16	1-1/2	1019471	–	–	.22	19.1	12.7	42.9	11.2	29.5	26.9	74.0	51.5	63.8	11.2	3.30	1.50	
1/2	2	1019472	1019481	–	.36	20.6	16.0	47.8	12.7	33.3	30.2	83.5	58.5	71.1	12.7	3.30	1.50	
5/8	3-1/4	1019490	1019506	1262013	.62	26.9	19.1	60.5	16.0	42.9	38.1	106	74.5	90.4	17.5	3.30	1.50	
3/4	4-3/4	1019515	1019524	1262022	1.23	31.8	22.4	71.5	19.1	51.0	46.0	126	89.0	105	20.6	6.35	1.50	
7/8	6-1/2	1019533	1019542	1262031	1.79	36.6	25.4	84.0	22.4	58.0	53.0	148	102	122	24.6	6.35	1.50	
1	8-1/2	1019551	1019560	1262040	2.28	42.9	28.7	95.5	25.4	68.5	60.5	167	119	137	26.9	6.35	1.50	
1-1/8	9-1/2	1019579	1019588	1262059	3.75	46.0	31.8	108	28.7	74.0	68.5	190	131	150	31.8	6.35	1.50	
1-1/4	12	1019597	1019604	1262068	5.31	51.5	35.1	119	31.8	82.5	76.0	210	146	170	35.1	6.35	1.50	
1-3/8	13-1/2	1019613	1019622	1262077	7.18	57.0	38.1	133	35.1	92.0	84.0	233	162	183	38.1	6.35	3.30	
1-1/2	17	1019631	1019640	1262086	8.62	60.5	41.4	146	38.1	98.5	92.0	254	175	196	41.1	6.35	3.30	
1-3/4	25	1019659	1019668	1262095	15.4	73.0	51.0	178	44.5	127	106	313	225	246	57.0	6.35	3.30	
2	35	1019677	1019686	–	23.7	82.5	57.0	197	51.0	146	122	348	253	275	61.0	6.35	3.30	
2-1/2	55	1019695	1019702	–	44.6	105	70.0	267	66.5	184	145	453	327	345	79.5	6.35	6.35	
3	† 85	1019711	–	–	70	127	82.5	330	76.0	200	165	546	365	384	92.0	6.35	6.35	
3-1/2	† 120 ‡	1019739	–	–	120	133	95.5	372	92.0	229	203	626	419	432	105	6.35	6.35	
4	† 150 ‡	1019757	–	–	153	140	108	368	104	254	229	653	468	451	116	6.35	6.35	

* NOTE: Maximum Proof Load is 2 times the Working Load Limit. Minimum Ultimate Strength is 6 times the Working Load Limit. For Working Load Limit reduction due to side loading applications, see page 94. † Individually Proof Tested with certification. ‡ Furnished in Anchor style only and furnished with eyebolts for handling.

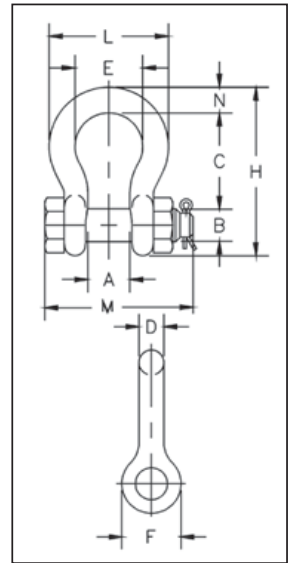
Crosby® Bolt Type Shackles



G-2130A

Bolt Type Anchor shackles with thin head bolt – nut with cotter pin. Meets the performance requirements of Federal Specification R-C-271G, Type IVA, Grade B, Class 3, except for those provisions required of the contractor. For additional information, see page 475.

- Capacities 2 to 17 metric tons.
- Meets or exceeds all requirements of Grade 8 shackles.
- Working Load Limit permanently shown on every shackle.
- Forged Alloy Steel – Quenched and Tempered, with bow and bolt.
- Hot Dip galvanized.
- Shackles can be **RFID EQUIPPED**.
- Meets or exceeds all requirements of ASME B30.26 including identification, ductility, design factor, proof load and temperature requirements. Importantly, G-2130A meet other critical performance requirements including impact properties and material traceability, not addressed by ASME B30.26.
- Shackles can be furnished proof tested with certificates to designated standards, such as ABS, DNV, Lloyds, or other certification when requested at time of order.
- Type Approval and certification in accordance with DNV 2.7-1 O fshore Containers.
- Shackles are Quenched and Tempered and meet DNV impact requirements of 42 Joules (31 ft•lbf) at -40° C (-40° F).



Shackles



SEE APPLICATION INFORMATION
On Page 92 of the General Catalog
Para Español: www.thecrosbygroup.com

G-2130A Alloy Bolt Bolt Type Shackles Grade 8

Nominal Size (in)	Working Load Limit (t)*	G-2130A Stock No.	Weight Each (kg)	Dimensions (mm)										Tolerance +/-	
				A	B	C	D	E	F	H	L	M	N	C	A
1/2	2	1219472	.36	20.6	16.0	47.8	12.7	33.3	30.2	83.5	58.5	71.1	12.7	3.30	1.50
5/8	3-1/4	1219491	.62	26.9	19.1	60.5	16.0	42.9	38.1	106	74.5	90.4	17.5	6.35	1.50
3/4	4-3/4	1219516	1.23	31.8	22.4	71.5	19.1	51.0	46.0	126	89.0	105	20.6	6.35	1.50
7/8	6-1/2	1219534	1.79	36.6	25.4	84.0	22.4	58.0	53.0	148	102	122	24.6	6.35	1.50
1	8-1/2	1219552	2.28	42.9	28.0	95.5	25.4	68.5	60.5	167	119	137	26.9	6.35	1.50
1-1/8	9-1/2	1219578	3.75	46.0	31.8	108	28.7	74.0	68.5	190	131	150	31.8	6.35	1.50
1-1/4	12	1219598	5.31	51.5	35.1	119	31.8	82.5	76.0	210	146	170	35.1	6.35	1.50
1-3/8	13-1/2	1219614	7.18	57.0	38.1	133	35.1	92.0	84.0	233	162	183	38.1	6.35	3.30
1-1/2	17	1219632	8.62	60.5	41.4	146	38.1	98.5	92.0	254	175	196	41.1	6.35	3.30

* NOTE: Maximum Proof Load is 2 times the Working Load Limit. Minimum Ultimate Strength is 8 times the Working Load Limit. For Working Load Limit reduction due to side loading applications, see page 94.



Testing the Limits

In 2013, Sir Ranulph Fiennes and five colleagues set out to test the limits of human endurance and achieve the feat of becoming the first individual to cross the continent of Antarctica in winter. As a proud partner in this endeavor, Crosby provided its full range of COLD TUFF® products, which are specifically manufactured to function in extreme environments such as those encountered throughout the expedition—including temperatures as low as -90° C.

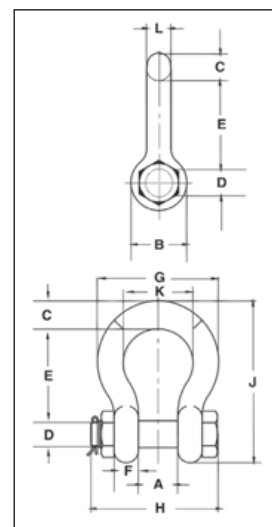




G-2140 / S-2140

G-2140 meets the performance requirements of Federal Specification RR-C-271F, Type IVA, Grade B, Class 3, except for those provisions required of the contractor. For additional information, see page 475.

- Quenched and Tempered.
- Alloy bows, Alloy bolts.
- Forged Alloy Steel 2 thru 200 metric tons. Cast Alloy Steel 250 thru 400 metric tons. Meets performance requirements of Grade 8 shackles.
- Working Load Limit is permanently shown on every shackle.
- 30, 40, 55, and 85 metric ton shackle bows are available galvanized or self colored with bolts that are galvanized and painted red.
- Sizes 3/8 inch and below are mechanically galvanized.
- 120, 150, 175 metric ton shackle bows are hot-dip galvanized; bolts are Dimetcoated and painted red.
- 400 metric ton shackle bows are Dimetcoated; bolts are Dimetcoated and painted red.
- Sizes 1-1/2 and larger are **RFID EQUIPPED**.
- Approved for use at -40° C (-40° F) to 204° C (400° F).
- Shackles are Quenched and Tempered and can meet DNV impact requirements of 42 Joules (31 ft•lbf) at -20° C (-4° F).
- All sizes are individually proof tested to 2.0 times the Working Load Limit.
- Refer to page 87 for Crosby COLD TUFF® shackles that meet the additional requirements of DNV rules for certification of lifting applications - Loose Gea .
- Shackles 200 metric tons and larger are provided as follows.
 - Serialized bolt and bow
 - Material certification (chemical)
 - Magnetic particle inspected.
 - Certification must be requested at time of orde .
- Meets or exceeds all requirements of ASME B30.26 including identification, ductilit , design factor, proof load and temperature requirements. 2140 shackles meet other critical performance requirements including impact properties and material traceability, not addressed by ASME B30.26.
- Type Approval certification in accordance with ABS 2016 Steel Vessel Rules and 2016 ABS Guide for Certification of Lifting Appliances available. Certificates available when requested at time of order and may include additional charges.
- Look for the Red Pin® . . . the mark of genuine Crosby quality.



SEE APPLICATION INFORMATION

On Page 92 of the General Catalog
Para Español: www.thecrosbygroup.com

G-2140 / S-2140 Crosby® Alloy Bolt Type Anchor Shackles

Nominal Shackle Size (in)	Working Load Limit (t)*	Stock No.			Weight Each (kg)	Dimensions (mm)											Tolerance +/-	
		G-2140	S-2140	G-2140OC		A	B	C	D +/- .5	E	F	G	H	J	K	L	A	E
3/8	2	1021015	-	-	0.15	16.8	23.1	9.7	11.2	36.6	9.7	45.2	55.1	63.2	26.2	9.7	1.5	3.3
7/16	2 2/3	1021020	-	-	0.22	19.1	26.9	11.2	12.7	42.9	10.4	51.6	63.8	73.9	29.5	11.2	1.5	3.3
1/2	3 1/3	1021029	-	-	0.36	20.6	30.2	12.7	16.3	47.8	11.7	58.7	71.1	83.3	33.3	12.7	1.5	3.3
5/8	5	1021038	-	-	0.76	26.9	38.1	17.5	19.6	60.5	14.7	74.7	90.4	106.4	42.9	16.0	1.5	3.3
3/4	7	1021047	-	-	1.23	31.8	46.0	20.6	22.6	71.4	17.5	88.9	105.4	126.2	50.8	19.1	1.5	6.4
7/8	9 1/2	1021056	-	-	1.79	36.6	53.1	24.6	25.9	84.1	20.6	102.4	122.4	148.1	57.9	22.4	1.5	6.4
1	12 1/2	1021065	-	-	2.57	42.9	60.5	26.9	29.2	95.3	23.4	119.1	136.9	166.6	68.3	25.4	1.5	6.4
1 1/8	15	1021074	-	-	3.75	46.0	68.3	31.8	31.8	108.0	26.4	131.1	149.9	189.7	73.9	28.7	1.5	6.4
1 1/4	18	1021083	-	-	5.31	51.6	76.2	35.1	35.6	119.1	29.5	146.1	169.9	209.6	82.6	32.8	1.5	6.4
1 3/8	21	1021092	-	-	7.18	57.2	84.1	38.1	38.9	133.4	32.5	162.1	183.1	232.7	92.2	36.1	3.3	6.4
1-1/2	30	1021110	1021129	1262407	8.52	60.5	91.9	41.1	41.4	146	35.3	175	196	254	98.6	38.9	3.3	6.4
1-3/4	40	1021138	1021147	1262416	15.4	73.2	106	57.2	50.8	178	44.5	224	237	313	127	46.7	3.3	6.4
2	55	1021156	1021165	1262425	23.6	82.6	122	61.0	57.2	197	50.8	258	264	347	146	52.8	3.3	6.4
2-1/2	85	1021174	1021183	1262434	43.5	105	148	79.2	69.9	267	66.5	324	345	455	184	68.8	6.4	6.4
3	120	1021192	-	1262443	81	127	165	92.2	82.6	330	76.2	371	384	546	200	79.2	6.4	6.4
3-1/2	† 150	1021218	-	1262452	120	133	203	111	95.3	372	95.3	432	448	632	229	91.9	6.4	6.4
4	† 175	1021236	-	1262461	153	140	229	116	108	368	102	457	517	652	254	102	6.4	6.4
4 3/4	† 200	1021234	-	-	209	184	267	127	121	386	116	529	611	706	279	121	6.35	6.35
5	† 250	1021243	-	-	276	216	305	143	127	470	123	600	632	828	330	127	4.0	1.80
6	† 300	1021252	-	-	362	213	330	154	152	475	124	629	666	871	330	149	4.0	1.80
7**	† 400	1021478	-	-	500	210	356	184	178	572	165	660	728	1022	330	152	6.4	6.4

* Note: Maximum Proof Load is 2 times the Working Load Limit. Minimum Ultimate Load is 4.5 times the Working Load Limit on 2 thru 21 metric tons. For sizes 30 thru 175 metric tons, Minimum Ultimate Load is 5.4 times the Working Load Limit for 200 thru 400 metric tons, Minimum Ultimate Load is 4. times the Working Load Limit. ** Cast Alloy Steel.

† Furnished with Round Head Bolts with an handle for handling. For Working Load Limit reduction due to side loading applications, see page 94.

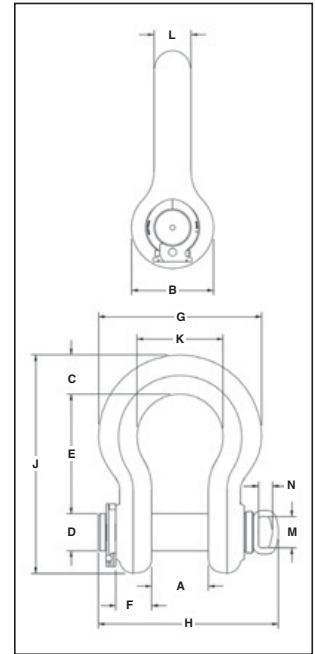
Crosby® Alloy Easy-Loc® Shackles



G-2140E

G-2140E meets the performance requirements of Federal Specification RR-C-271G, Type IVA, Grade B, Class 3, except for those provisions required of the contractor. For additional information, see page 475.

- Quenched and Tempered.
- Alloy bows, Alloy bolts.
- Forged Alloy Steel 200 thru 300 metric tons. Meets performance requirements of Grade 8 shackles.
- Working Load Limit is permanently shown on every shackle.
- 200, 250, and 300 metric ton shackle bows are Dimetcoated®; pins are Dimetcoated and painted red.
- All sizes are larger than 1-1/2 IN, **RFID EQUIPPED**.
- Approved for use at -40° C (-40° F) to 204° C (400° F).
- Shackles are Quenched and Tempered and can meet DNV impact requirements of 42 Joules (31 ft•lbf) at -20° C (-4° F).
- All sizes are individually proof tested to 2.0 times the Working Load Limit.
- Refer to page 87 for Crosby COLD TUFF® shackles that meet the additional requirements of DNV rules for certification of lifting applications - Loose Gear.
- Shackles are provided as follows:
 - Serialized bolt and bow
 - Material certification (chemical
 - Magnetic particle inspected.
 - Certification must be requested at time of order .
- Meets or exceeds all requirements of ASME B30.26 including identification, ductility, design factor, proof load and temperature requirements. Importantly, these shackles meet other critical performance requirements including impact properties and material traceability, not addressed by ASME B30.26.
- Type Approval certification in accordance with ABS 2016 Steel Vessel Rules and 2016 ABS Guide for Certification of Lifting Appliances. Certificates available when requested at time of order and may include additional charges.
- Look for the Red Pin® . . . the mark of genuine Crosby quality.



Shackles



SEE APPLICATION INFORMATION
 On Page 92 of the General Catalog
 Para Español: www.thecrosbygroup.com

G-2140E Crosby® Alloy Easy-Loc Shackles

Nominal Shackle Size (in)	Working Load Limit (t)*	Stock No.	Weight Each (kg)	Dimensions (mm)													Tolerance +/-	
				A	B	C	D +/- .5	E	F	G	H	J	K	L	M	N	A	E
4-3/4	† 200	1021475	208	184	267	127	121	386	116	529	587	706	279	121	101	45.7	6.4	6.4
5	† 250	1021484	271	216	305	143	127	470	114	600	617	829	330	127	101	45.7	6.4	6.4
6	† 300	1021493	359	213	330	154	152	475	124	629	646	871	330	149	101	45.7	6.4	6.4

* Note: Maximum Proof Load is 2 times the Working Load Limit. For 200 thru 400 metric tons, Minimum Ultimate Load is 4 times the Working Load Limit. † Furnished with Round Head Bolts with a handle for handling. For Working Load Limit reduction due to side loading applications, see page 94.

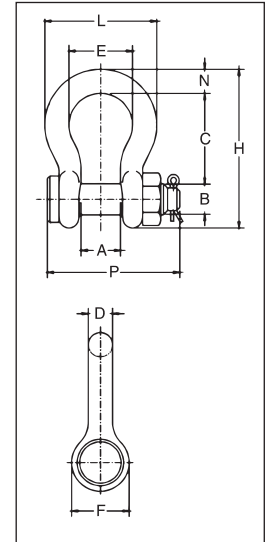
Crosby® Grommet Shackles



G-2130CT / G-2140CT



- Forged - Quenched and Tempered, with alloy bolt.
 - G-2130CT - Carbon Steel
 - G-2140CT - Alloy Steel
- Working Load Limit permanently shown on every shackle.
- Individually serialized with certification
- Fatigue Rated (G-2130CT only).
- Shackles 25t and larger are **RFID EQUIPPED**.
- All sizes are individually proof tested to 2.0 times the Working Load Limit.
- Finish is inorganic zinc primer.
- Bow and bolt are certified to meet charpy impact testing of 42 Joules (31 f • lbf) min. avg. at -20° C (-4° F).
- Individually mag inspected with certification
- Type Approval and certification in accordance with DNV 2.7-1 O fshore Containers, and Rules for Certification of Lifting Appliances, DNV-OS-E101 and are produced in accordance with DNV MSA requirements, including required documents.
- DNV certified minimum design temperature -4° . May be used at -50°F (-45° C) in non DNV applications.
- Refer to page 167 for COLD TUFF® Master Links and Master Link assemblies.



Shackles



SEE APPLICATION INFORMATION
On Page 92 of the General Catalog
Para Español: www.thecrosbygroup.com

Crosby® G-2130CT COLD TUFF® Shackles

Nominal Shackle Size (in)	Working Load Limit (t)*	G-2130CT Stock No.	Weight Each (kg)	Dimensions (mm)										Tolerance +/-	
				A	B	C	D	E	F	H	L	N	P	A	C
3/4	4-3/4	1260568	1.23	31.8	22.4	71.5	19.1	51.0	46.0	126	89.0	20.6	108	1.50	6.35
7/8	6-1/2	1260577	1.76	36.6	25.4	84.0	22.4	58.0	53.0	148	102	24.6	120	1.50	6.35
1	8-1/2	1260586	2.57	42.9	28.7	95.5	26.2	68.5	60.5	167	119	26.9	137	1.50	6.35
1-1/8	9-1/2	1260595	3.75	46.0	31.8	108	28.7	74.0	68.5	190	131	31.8	150	1.50	6.35
1-1/4	12	1260604	5.31	51.5	35.1	119	32.8	82.5	76.0	210	146	35.1	168	1.50	6.35
1-3/8	13-1/2	1260613	6.85	57.0	38.1	133	35.1	92.0	84.0	233	162	38.1	183	3.30	6.35
1-1/2	17	1260622	9.43	60.5	41.4	146	39.1	98.5	92.0	254	175	41.1	195	3.30	6.35
1-3/4	25	1260633	15.4	73.0	51.0	178	46.7	127	106	313	225	57.0	233	3.30	6.35

Bolt Type Anchor shackle with thin head bolt - nut with cotter pin. Meets the performance requirements of Federal Specification RR-C-271 , Type IVA, Grade A, Class 3, except for those provisions required of the contractor. For additional information, see page 466.



* NOTE: Maximum Proof Load is 2 times the Working Load Limit. 4-3/4t - 25t, Minimum Ultimate Load is 5.4 times the Working Load Limit. For Working Load Limit reduction due to side loading applications, see page 94.

Crosby® G-2140CT COLD TUFF® Shackles

Nominal Shackle Size (in)	Working Load Limit (t)*	G-2140CT Stock No.	Weight Each (kg)	Dimensions (mm)										Tolerance +/-	
				A	B	C	D	E	F	H	L	N	P	A	C
1-1/2	30	1260801	9.43	60.5	41.4	146	38.9	98.6	91.9	254	175	41.1	196	3.3	6.4
1-3/4	40	1260812	15.4	73.2	50.8	178	46.7	127	106	313	224	57.2	237	3.3	6.4
2	55	1260823	23.6	82.6	57.2	197	52.8	146	122	347	258	61.0	264	3.3	6.4
2-1/2	85	1260834	43.5	105	69.9	267	68.8	184	148	455	324	79.2	345	6.4	6.4
3	120	1260843	81	127	82.6	330	79.2	200	165	546	371	92.2	384	6.4	6.4
3-1/2	† 150	1260852	120	133	95.3	372	91.9	229	203	632	432	111	448	6.4	6.4
4	† 175	1260861	153	140	108	368	102	254	229	652	457	116	517	6.4	6.4
4-3/4	† 200	1260870	204	184	121	397	114	279	267	743	533	152	539	6.4	6.4
5	† 250	1260889	272	216	127	508	114	330	305	889	622	165	576	6.4	6.4

Bolt Type Anchor shackle with thin head bolt - nut with cotter pin. Meets the performance requirements of Federal Specification RR-C-271G, Type IVA, Grade B, Class 3, except for those provisions required of the contractor. For additional information, see page 466.



* NOTE: Maximum Proof Load is 2 times the Working Load Limit. 30t - 175t, Minimum Ultimate Load is 5.4 times the Working Load Limit. 200t and larger, Minimum Ultimate Load is 4 times the Working Load Limit. † Furnished with Round Head Bolts with welded handle. For Working Load Limit reduction due to side loading applications, see page 94.